

| *one-stop service for the Fashion Industry*



**HKL Group** is a business platform where four partner companies gather to create a synergistic **one-stop service for the fashion industry.**

Our group includes two direct manufacturing plants for jewellery, leather goods and garments, an export trading company and a quality control service.

From **material sourcing and proto development to excellent product craft and quality control**, we offer a professional manufacturing service and deliver the best results to the most demanding clientele in the fashion industry.

01



*The trading platform  
of our group.*



*Jewellery and  
leather accessories  
production plant.*



*Garment creation  
and production plant.*



*Quality Control service  
provider.*



Hong Kong Link Limited is HKL Group's **trading company**.

Founded in 2003 in the dynamic city of Hong Kong, it initially served as export trading platform for fashion jewellery between Asia and Europe.

With the establishment of our direct production plants Shuang Li and Suntex, Hong Kong Link has become the **platform's trading company for both local and overseas clients**.

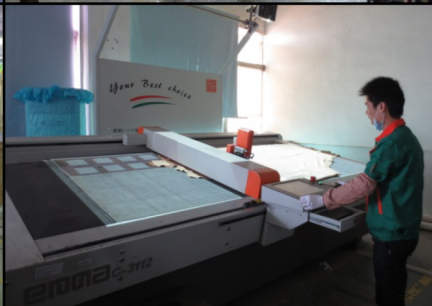
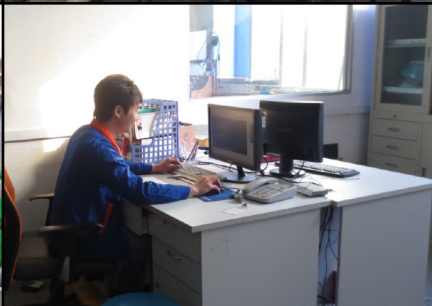
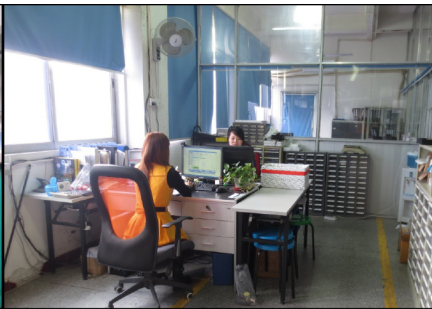
YEAR OF ESTABLISHMENT: **2003**

LOCATION: **Hong Kong**

BUSINESS NATURE: **Trading**

MANAGEMENT: **2 professionals**









In 2006 we started **direct production of jewellery** in Dongguan, Guangdong Province, on an initial surface of 1,500 square meters and with a workforce of 80 workers devoted to the manufacturing of jewellery and imitation jewellery using mainly alloy, stainless steel and silver.

Shuang Li quickly grew a major reputation in the field, being able to innovate jewellery products with the combined use of metals with genuine leather, rubber and gold, all imported from Italy.

In 2008 we diversified and expanded our product line by **adding a leather accessory production line** and two warehouses, reaching the final overall area of 3,000 square meters. Thanks to its professional management and two separate production departments, Shuang Li delivers excellent jewellery and leather goods to the most demanding fashion brands.



YEAR OF ESTABLISHMENT: **2006**

LOCATION: **Chang'An Town, Dongguan, Guangdong, China**

BUSINESS NATURE: **Jewellery and Leather Goods Manufacturing**

PRODUCTS: **Jewellery, leather and imitation leather bags and accessories**

R&D: **In-house sourcing, development and purchase of raw materials**

LICENSES: **Import & export**

FACTORY AREA: **3,000 sqm**

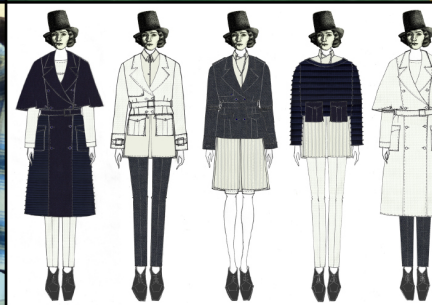
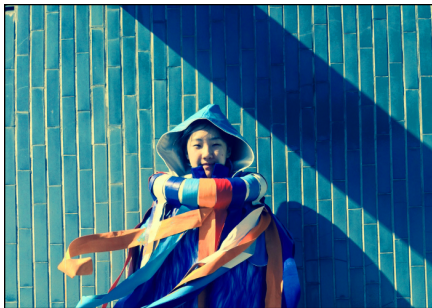
AVERAGE MONTHLY PRODUCTION CAPACITY: **10,000pcs jewellery/8,000pcs leather goods**

AVERAGE MONTHLY WORKFORCE: **90 workers**

MANAGEMENT: **10 professionals**

MAIN MARKETS: **Europe, North America, Hong Kong**









Driven by our professional commitment to continuously satisfy the demand of our clientele, we further expanded and diversified our business by establishing Suntex Industrial Co. Ltd, an **apparel manufacturing company** with a head office in Shanghai and a new production plant of 1,800 square meters in Suzhou, Jiangsu.

Suntex can assist any fashion brand with sourcing, developing and crafting different textiles, and produce a vast range of garments such as woven, knit and outerwear. All our materials respect the EU REACH regulations. By adding these categories to our product line we want to reach the goal of **maximizing our clients' production cost-effectiveness** by offering the opportunity to develop both their garment and accessory collections within one centrally managed company.





YEAR OF ESTABLISHMENT: **2013**

LOCATION: **Shanghai/Suzhou, China**

BUSINESS NATURE: **Garment Manufacturing**

PRODUCTS: **Woven & knitted garments, outerwear, down & fake down jackets, etc.**

R&D: **In-house sourcing, development, proto making, purchasing of fabrics and raw materials**

LICENSES: **Import & export**

FACTORY AREA: **1,800 sqm**

AVERAGE MONTHLY WORKFORCE: **70 workers**

MANAGEMENT: **8 professionals**

MAIN MARKETS: **Europe, Hong Kong, China**

**Asia Partners Ltd.** is HKL Group's Quality Control and Consulting service provider. It was created in 2010 in order to guarantee one of HKL Group's most precious values: **quality**.

We understand that perfection is hard to reach; nonetheless, we are committed to deliver **'problem-free' final goods** by monitoring our manufacturing plants at all times.

APL follows ISO 2859 procedures. Since 2013, Asia Partners also offers third-party tailor-made QC & QA inspection services throughout China and Southeast Asia. We ensure our estimate clients the highest level of accuracy and integrity.



YEAR OF ESTABLISHMENT: **2013**

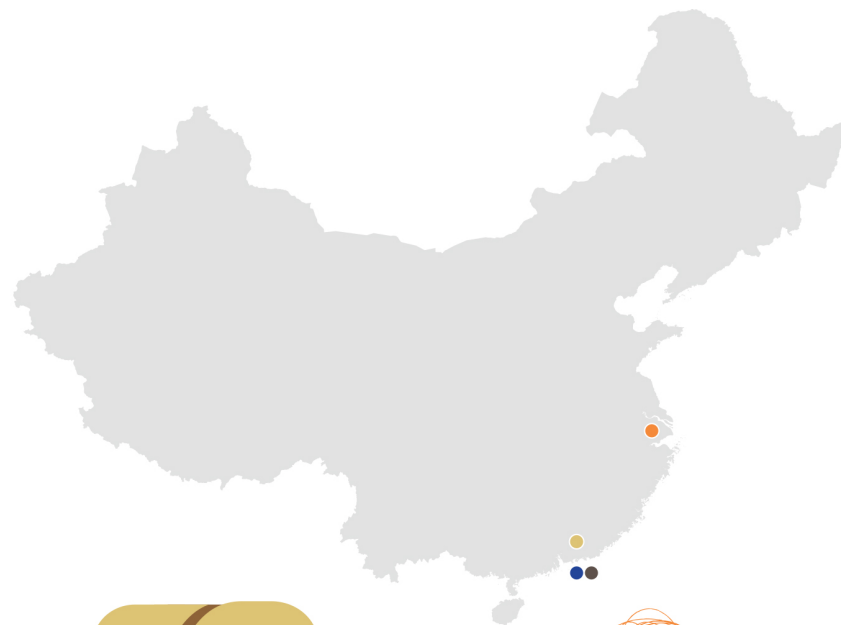
LOCATION: **Hong Kong & Shanghai, China**

BUSINESS NATURE: **Quality Control, Consulting and Inspection Services**

STAFF: **8 professional inspectors**

MANAGEMENT: **1 Q.A. & Q.C. coordinator**

MAIN AREAS: **China & Southeast Asia**



Hong Kong Link Ltd.

1F, Room A,  
Wing Tat Commercial Bldg.  
121-125 Wing Lok Street  
Sheung Wan – Hong Kong

香港辉联有限公司

1楼A,  
永达商业大厦,  
永乐街121-125  
上环,香港

t: (+852) 2631 4404  
f: (+852) 2631 0904

Shuang Li Jewellery&Leather Co. Ltd.

5/F, E Bldg, Li Cheng Industrial Park  
Changan Town, Dongguan City,  
Guangdong Province, China.

东莞市双利五金皮具有限公司

广东省 东莞市 长安镇  
新安社区 圳地村  
利成工业城 E栋5楼

t: (+86) 769-8188 8301  
f: (+86) 769-8188 8161

Suntex Industrial Co. Ltd.

3/F, Unit 310,  
Jingan Modern Industrial Park  
68 Changping Road JingAn District  
20004 Shanghai China

上海太纺实业有限公司

3楼310室  
静安现代产业大厦  
昌平路68号静安区  
20004上海中国

t: (+86) 21-62670215  
f: (+86) 21-62670289

Asia Partners Ltd.

1F, Room A,  
Wing Tat Commercial Bldg.  
121-125 Wing Lok Street  
Sheung Wan – Hong Kong

亚合国际有限公司

1楼A,  
永达商业大厦,  
永乐街121-125  
上环,香港

t: (+852) 2631 4404  
f: (+852) 2631 0904



*ready to serve you...*

---

[info@hklgroup.com.hk](mailto:info@hklgroup.com.hk)

1F, RM A,  
Wing Tat Commercial Bldg.  
121-125 Wing Lok Street  
Sheung Wan – Hong Kong

tel: (+852) 2631 4404  
fax :(+852) 2631 0904

1楼A,  
永达商业大厦,  
永乐街121-125  
上环,香港

t: (+852) 2631 4404  
f: (+852) 2631 0904